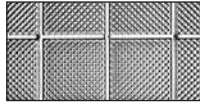
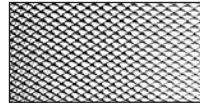


LIGHTING SHEET

Lighting Sheet



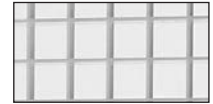
Prisma-Square



Prismatic clear & white



Cracked Ice clear & white



Egg Crate Louver white & metallic

OPTIX Acrylic Lighting Panels

Item #	Description	Sq. Ft.	Qty.
1A00702A	Prisma Square Clear 23.75" x 47.75"	7.87	20 Pack
1A20083A	Prismatic Clear 23.75" x 47.75"	7.87	20 Pack
1A20084A	Prismatic White 23.75" x 47.75"	7.87	20 Pack
1A30020A	Prismatic Clear 23.75" x 23.75"	3.91	25 Pack
1A30021A	Prismatic White 23.75" x 23.75"	3.91	25 Pack
1420083A	Cracked Ice Clear 23.75" x 47.75"	7.87	20 Pack
1420084A	Cracked Ice White 23.75" x 47.75"	7.87	20 Pack
1405060A	Cracked Ice Clear 36" x 60"	15	10 Pack
1405061A	Cracked Ice White 36" x 60"	15	10 Pack
1435020A	Cracked Ice Clear 23.75" x 23.75"	3.91	25 Pack
1435021A	Cracked Ice White 23.75" x 23.75"	3.91	25 Pack

Micro-Prism Acrylic Lighting Panels

Item #	Description	Sq. Ft.	Qty.
1A90000A	Micro Prism White Frost Glaze 23.75" x 47.25"	7.87	20 Pack
1A90001A	Micro Prism Clear Frost Glaze 23.75" x 47.25"	7.87	20 Pack
671003-1-25	Micro Prism Clear 23.75" x 47.25"	7.87	25 Pack

Styrene Louvers

Item #	Description	Sq. Ft.	Qty.
1199232A	Egg Crate White 1/2" x 1/2" x 3/8", 23.75" x 47.75"	7.87	5 Pack
1199241A	Egg Crate White 1/2" x 1/2" x 1/2", 23.75" x 47.75"	7.87	10 Pack
1199238A	Egg Crate Metallic 1/2" x 1/2" x 3/8", 23.75" x 47.75"	7.87	5 Pack
1199233A	Egg Crate White 1/2" x 1/2" x 3/8", 23.75" x 47.75"	7.87	15 Pack
1199234A	Egg Crate Metallic 1/2" x 1/2" x 3/8", 23.75" x 47.75"	7.87	15 Pack

DURALENS®

Premium Grade Acrylic Lighting Panels

Item #	Description	Sq. Ft.	Qty.
1430083A *	Cracked Ice Clear 23.75" x 47.75"	7.87	20 Pack
1430084A *	Cracked Ice White 23.75" x 47.75"	7.87	20 Pack
1A30084A *	PL21 Prismatic White 23.75" x 47.75"	7.87	20 Pack
1A30083A *	Prismatic Clear 23.75" x 47.75"	7.87	20 Pack
1A00703A *	Prisma Square Clear 23.75" x 47.75"	7.87	20 Pack

The above DURALENS lighting panels are covered by a 10-year limited replacement warranty against breakage.

Visit www.plaskolite.com/duralens_warranty for details.

* Denotes Consumer/Retail Item

Distributed by:



Piedmont Plastics®

where solutions take shape

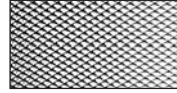
Toll Free: 1.800.277.7898

www.piedmontplastics.com

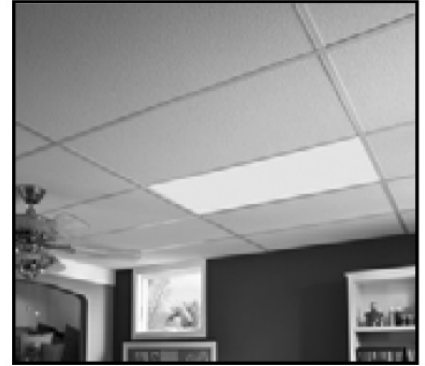
LIGHTING SHEET

Lighting Sheet

Pattern 12 (PL-21) Prismatic patterned lighting sheet is available in clear, white, Frost and silvertint.



Pattern 12 (PL21)
Prismatic



Acrylic Prismatic Lighting Sheet 3/16" Square Base Female Conical Pattern

Item #	Description	Sq. Ft.	Qty.
225852-1	Pattern 12 (PL-21) Prismatic Clear .095" 22.50" x 46.50"	7.27	30 Pack
225196-1	Pattern 12 (PL-21) Prismatic Clear .095" 22.50" x 46.50"	7.27	300 Bulk
225181-1	Pattern 12 (PL-21) Prismatic Clear .095" 23.75" x 47.75"	7.87	300 Bulk
225114-1	Pattern 12 (PL-21) Prismatic Clear .095" 23.75" x 47.75"	7.87	30 Pack
225604-1	Pattern 12 (PL-21) Prismatic Frost .095" 23.75" x 47.75"	7.87	300 Bulk
225433-1	Pattern 12 (PL-21) Prismatic Clear .095" 50" x 51"	17.72	250 Bulk
225686-1	Pattern 12 (PL-21) Prismatic Clear .095" 50" x 100"	34.75	100 Bulk
225218-1	Pattern 12 (PL-21) Prismatic Clear .110" 23.75" x 47.75"	7.87	300 Bulk
225252-1	Pattern 12 (PL-21) Prismatic Clear .110" 23.75" x 47.75"	7.87	30 Pack
225122-1	Pattern 12 (PL-21) Prismatic Clear .110" 22.50" x 46.50"	7.27	20 Pack
225047-1	Pattern 12 (PL-21) Prismatic Clear .110" 50" x 51"	17.72	300 Bulk
225687-1	Pattern 12 (PL-21) Prismatic Clear .125" 50" x 100"	34.75	100 Bulk
225342-1	Pattern 12 (PL-21) Prismatic Clear .125" 23.75" x 47.75"	7.87	250 Bulk
225391-1	Pattern 12 (PL-21) Prismatic Clear .125" 23.75" x 47.75"	7.87	25 Pack
225734-1	Pattern 12 (PL-21) Prismatic Clear .125" 22.50" x 46.50"	7.27	25 Pack
225354-1	Pattern 12 (PL-21) Prismatic Clear .125" 50" x 51"	17.72	250 Bulk
1A48484A	Pattern 12 (PL-21) Prismatic Clear .125" 48" x 96"	32	50 Bulk
1A48485A	Pattern 12 (PL-21) Prismatic Clear .125" 48" x 96"	32	5 Pack
225597-1	Pattern 12 (PL-21) Prismatic Frost .125" 23.75" x 47.75"	7.87	250 Bulk
225688-1	Pattern 12 (PL-21) Prismatic Frost .125" 50" x 100"	34.75	80 Bulk
225231-1	Pattern 12 (PL-21) Prismatic White .125" 50" x 100"	34.75	80 Bulk
225375-1	Pattern 12 (PL-21) Prismatic Silvertint .125" 23.75" x 47.75"	7.87	25 Pack
225396-1	Pattern 12 (PL-21) Prismatic Clear - .125" Min. 23.75" x 47.75"	7.87	200 Bulk
227001-1	Pattern 12 (PL-21) Prismatic Clear - .156" 23.75" x 47.75"	7.87	200 Bulk
225412-1	Pattern 12 (PL-21) Prismatic Clear - .187" 23.75" x 47.75"	7.87	150 Bulk
225430-1	Pattern 12 (PL-21) Prismatic Clear - .187" 50" x 51"	17.72	150 Bulk

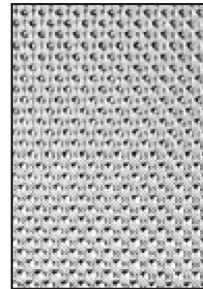
KSH® LIGHTING LENS SERIES

KSH® Lighting Lens Series

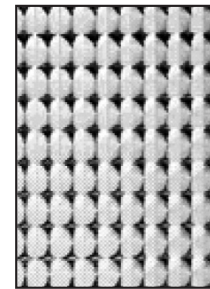
The KSH series of light controlling products from Plaskolite were designed to meet the requirements of today's sophisticated work environments. Each of the KSH lenses was designed to control and direct fluorescent and HID lighting, based on specific industry requirements, while maintaining a high level of visual comfort. In addition to the stock items, many lenses are available cut to your specifications. Call for details.

KSH Lighting Panel Series Color & Pattern Descriptions:

- UVALITE® - a matte finish that provides additional ultraviolet protection.
- UVALITE® Plus - a smooth finish that provides optimum ultraviolet protection.
- RF - Radio Frequency suppression to prevent interference in computing and testing equipment.
- ACRI-TUF® - 10-20 times stronger than standard acrylic panels.
- Silvertint - offers low brightness, increasing visual comfort.
- LED - provides optimum light transmission while eliminating undesired pinpoints of light.



KSH-12



KSH-15

KSH®-12

An acrylic prismatic panel with a 3/16" square base female conical prism placed on a 45° axis. Straight sided prisms eliminate glare with increased lamp obscuration.

Item #	Description	Sq. Ft.	Qty.
125215-1	KSH 12 Prismatic Clear .125" 23.75" x 47.75"	7.87	250 Bulk
125000-1	KSH 12 Prismatic Clear RF .125" 23.75" x 47.75"	7.87	250 Bulk
125012-1	KSH 12 Prismatic Uvalite .125" 23.75" x 47.75"	7.87	250 Bulk
125278-1	KSH 12 Prismatic .125" Min. 23.75" x 47.75"	7.87	200 Bulk
128145-1	KSH 12 Prismatic ACRI-TUF .140" 23.75" x 47.75"	7.87	200 Bulk

KSH®-15

An acrylic prismatic panel with a bold 3/8" square base female conical prism placed parallel and perpendicular to the length and width of the panel.

The KSH-15 pattern panel provides:

- Excellent efficiency and direct glare control
- Suitable for use in large areas without objectionable sag

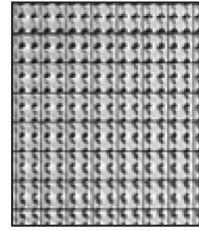
Item #	Description	Sq. Ft.	Qty.
155100-1	KSH 15 Prismatic Clear .200" 23.75" x 47.75"	7.87	150 Bulk
155115-1	KSH 15 Prismatic Clear .200" 50" x 51"	17.72	150 Bulk
155112-1	KSH 15 Prismatic Clear .200" 48" x 96"	32.12	50 Pack

KSH® LIGHTING LENS SERIES

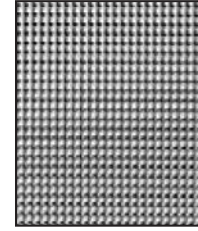
KSH® Lighting Lens Series

KSH®-19

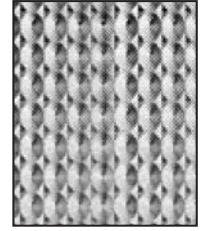
An acrylic prismatic panel with a 3/16" square base male conical prism placed parallel and perpendicular to the length and width of the panel. The Industry standard used to control high angled brightness and improve visual comfort.



KSH-19



KSH-20



KSH-23

Item #	Description	Sq. Ft.	Qty.
195121-1	KSH 19 Prismatic Clear .156" 23.75" x 47.75"	7.87	20 Pack
195000-1	KSH 19 Prismatic Clear RF .156" 23.75" x 47.75"	7.87	30 Pack
195130-1	KSH 19 Prismatic Clear .156" 50" x 51"	17.72	200 Bulk
195136-1	KSH 19 Prismatic Silvertint .156" 23.75" x 47.75"	7.87	20 Pack
195242-1	KSH 19 Prismatic Clear .187" 23.75" x 47.75"	7.87	15 Pack
196032-1	KSH 19 Prismatic Frost .156" 23.75" x 47.75"	7.87	200 Bulk

KSH®-20

An acrylic prismatic panel with a 1/8" square base male conical prism placed parallel and perpendicular to the length and width of the panel.

The KSH-20 panel provides:

- Excellent brightness control
- Soft surface appearance

Item #	Description	Sq. Ft.	Qty.
205100-1	KSH 20 Prismatic Clear .140" 23.75" x 47.75"	7.87	200 Bulk

KSH®-23

A clear acrylic lens with a unique combination of bold, shallow optics, providing excellent retention of the lens' surface texture and uniform surface appearance in fluorescent troffers. The truss-shaped prism design provides an economical solution to sagging lens problems.

The KSH-23 panel provides:

- High level of efficiency
- Eliminates lamp images
- Eliminates sagging

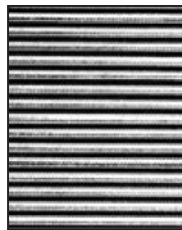
Item #	Description	Sq. Ft.	Qty.
235103-1	KSH 23 Clear .100" 23.75" x 47.75"	7.87	300 Bulk
235133-1	KSH 23 Clear .100" 50" x 51"	17.72	300 Bulk
235250-1	KSH 23 Frost .100" 23.75 x 47.75"	7.87	300 Bulk

KSH® LIGHTING LENS SERIES

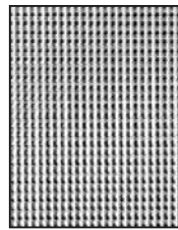
KSH® Lighting Lens Series

KSH®-25

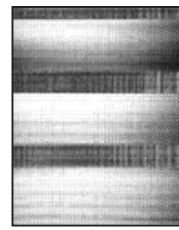
A linear ribbed lens with a 90° included angle on 1/8" centers. A hammertone texture is applied to diffuse light rays and eliminate harsh spikes of light. Panels are supplied with the ribs running parallel to the lamp axis.



KSH-25



KSH-32 CFL



KSH-34 HSS



KSH-Overlay

The KSH-25 lens is available with:

- "A" Fab - Cut to be installed with the ribs running parallel to the lamp axis (providing varying light distribution).
- "B" Fab - Cut to be installed with the ribs running perpendicular to the lamp axis (providing broad light distribution).

Item #	Description	Sq. Ft.	Qty.
255017-1	KSH 25 Clear .115" 50" x 50" (ribs run parallel to lamp axis)	8.33	200 Bulk

KSH®-32 CFL (Computer Friendly Lens)

An acrylic lens that has a raised prismatic pattern of male cones running parallel and perpendicular to the length & width of the lens.

The KSH-32 panel provides:

- Reduction in computer screen glare
- Good efficiency
- Excellent luminance control and lamp obscuration

Item #	Description	Sq. Ft.	Qty.
Contact Plaskolite for availability.			

KSH®-34 HSS (Hospital Surgical Suite)

The unique banded optic design of the acrylic lens requires a specific placement of the lamps in the luminaire. The lamps are arranged in 3 pairs of two lamps each, and are located over the male cone prism bands. To maximize the light output, the lamps are asymmetric about the luminaire centerline.

Specifically designed for supplemental surgical suite lighting, the scientifically placed male prismatic and linear lens elements provide an asymmetric distribution. This distribution directs maximum candle power to the surgical site as with typical luminaire layouts, while generously illuminating the surrounding areas.

Item #	Description	Sq. Ft.	Qty.
236003-1	KSH 34 HSS Clear RF .150" 22.75" x 47.75"	7.54	20 Pack

KSH® Overlay

A high transmission acrylic panel used as an overlay to diffuse lamp images and provide more uniform surface brightness.

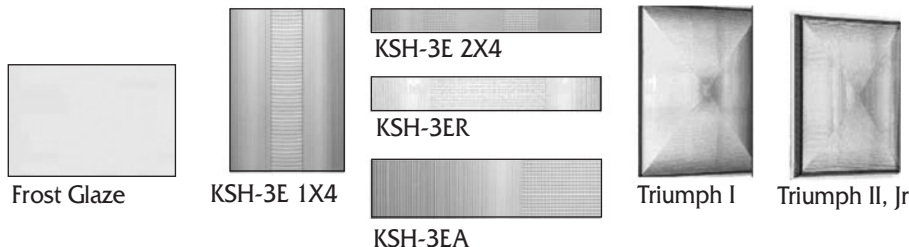
The KSH Overlay panel provides:

- Total lamp obscuration
- Reduced veiling reflections and reflected glare

Item #	Description	Sq. Ft.	Qty.
405118-1	Overlay Matte Clear .040" 23.75" x 47.75"	7.87	35 Pack
405100-1	Overlay Matte White .040" 23.75" x 47.75"	7.87	35 Pack
405112-1	Overlay Matte White .040" 50" x 51"	17.72	750 Bulk
315175-1	Clear Uvalite Plus .060" 24" x 48"	8	250 Bulk
405080-1	Overlay Matte White LED .040" 23.75 x 47.75"	7.87	750 Bulk

KSH® LIGHTING LENS SERIES

KSH® Lighting Lens Series



KSH® Frost Glaze

A mechanically textured white acrylic panel that has a heavy pebbled surface on one (down), and smooth on the other. The KSH White Frost Glaze Panel provides:

- Good light transmission and lamp obscuration

Item #	Description	Sq. Ft.	Qty.
535181-1	KSH White Frost Glaze .080" 23.75" x 47.75"	7.87	300 Bulk
535186-1	KSH White Frost Glaze .080" 50" x 51"	17.72	300 Bulk
535005-1	KSH White Frost Glaze .080" 50" x 110"	38.21	100 Bulk
535191-1	KSH White Frost Glaze .125" 23.75" x 47.75"	7.87	250 Bulk
535194-1	KSH White Frost Glaze .125" 50" x 51"	17.72	250 Bulk
535197-1	KSH White Frost Glaze .187" 50" x 51"	17.72	150 Bulk

KSH® -3E / 3ER / 3EA

The KSH 3E Series of lighting lenses provide significant energy savings by reducing the number of lamps per fixture and by increasing the spacing between fixtures.

- KSH 3E 1X 4 - a computer designed lens for a one lamp fluorescent luminaire for energy saving lighting, with its wide spread bi-symmetrical candlepower distribution making it ideal for coffer systems.
- KSH 3E 2X4 has a computer perfected blend of four optical bands that distribute candlepower to minimize ceiling reflections and increase task visibility.
- KSH 3ER - a scientific computer blend of 3 optical bands of female, elevating, and depressing prisms, designed for retrofitting a 4-lamp luminaire system to a 2-lamp. This conversion will save in operating costs, while maintaining 55-70% of the original footcandle levels.
- KSH 3EA - computer designed lens for one lamp fluorescent luminaire.

Item #	Description	Sq. Ft.	Qty.
Contact Plaskolite for availability.			

TRIUMPH®

The Triumph series of lighting lenses are designed specifically for HID lighting.

- TRIUMPH I - a computer perfected lens that squares the conventional circular light spread resulting in a need for fewer fixtures and a reduction in energy costs.
- TRIUMPH II (JR) - provides an optical control device for low-wattage HID. The patented optics accept horizontal or vertical lamp placement and provide wide spread spacing capabilities.

Item #	Description	Sq. Ft.	Qty.
735000-1	Triumph I Clear Acrylic 22.25" x 22.25"	3.7	10 Pack
739000-1	Triumph I Clear Polycarbonate 22.25" x 22.25"	3.7	10 Pack
735003-1	Triumph II Clear Acrylic 12" x 12"	1	20 Pack
739003-1	Triumph II Clear Polycarbonate 12" x 12"	1	20 Pack

Distributed by:



Toll Free: 1.800.277.7898
www.piedmontplastics.com