

# Alumet<sup>®</sup> Supply

## ANODIZED FINISHES



BRITE CLEAR



BRITE GOLD



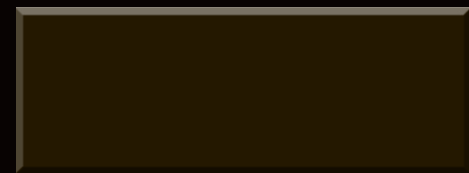
BRITE COPPER



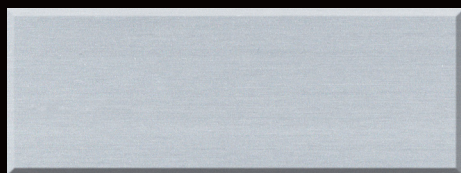
BRITE BRUSHED CLEAR



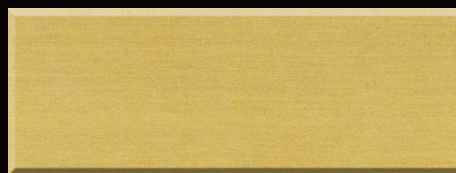
BRITE BRUSHED GOLD



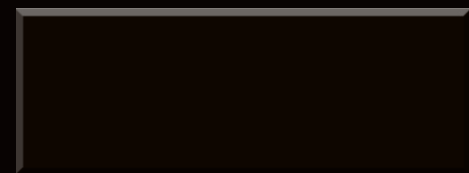
DARK BRONZE



CLEAR SATIN



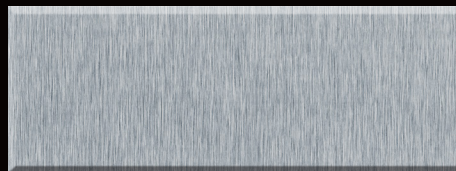
GOLD SATIN



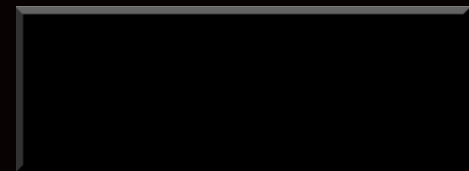
LA EXTRA DARK BRONZE



SPECULAR LIGHTING SHEET



ALUMA PLUS SL



BLACK

# ANODIZED FINISHES INFORMATION

## WHAT IS ANODIZING?

Anodizing is the successful development and control of a natural oxidation process that occurs when aluminum is exposed to the atmosphere. Electricity and chemicals are used jointly to produce a hard, transparent surface that is integral with the base aluminum.

### FEATURES AND BENEFITS

- Hard durable finish
- Transparent, aesthetically pleasing appearance
- Insulative and static resistant
- Integral with the aluminum surface
- Nonmagnetic
- Thermal management properties

### STANDARD AND CUSTOM PRODUCTS

A wide selection of colors and finishes to create alternative metal looks with options in finish, brightness, formability and performance. This would include Brass, Titanium, Gold and Stainless Steel.

FINISHES	PROCESSING CAPABILITIES
<ul style="list-style-type: none"> <li>• Satin</li> <li>• Brushed</li> <li>• Brite</li> <li>• Brite Brushed</li> <li>• Specular</li> </ul>	<ul style="list-style-type: none"> <li>• Cut-to-length</li> <li>• Narrow width coil</li> <li>• Channel letter coil</li> <li>• Blanking</li> <li>• Special packaging</li> </ul>

STANDARD FINISHES								
GAUGE	.020	.025	.032	.040	.050	.063	.080	.125
WIDTHS	48	48	48	48	48	48	48	48
Black Anodized				✓				
Brite Brushed Clear			✓	✓				
Brite Brushed Gold			✓	✓				
Brite Clear Anodized			✓	✓				
Brite Gold Anodized				✓				
Bronze Anodized			✓	✓	✓	✓		
Clear Anodized			✓	✓	✓	✓	✓	✓
Gold Anodized			✓	✓				
Specular Lighting	✓	✓						
LA Extra Dark Bronze				✓	✓	✓		
Brite Copper Anodized				✓				
Aluma Plus SL				✓				

### APPLICATIONS

- |  |   |
|--|---|
| <ul style="list-style-type: none"> <li>• Signage, point of purchase displays and exhibits</li> <li>• Nameplates and identification tags</li> <li>• Commercial architectural wall panels, ceiling systems, hardware</li> <li>• Transportation - automotive and truck decorative trim</li> </ul> | <ul style="list-style-type: none"> <li>• Commercial lighting</li> <li>• Appliances - decorative usage</li> <li>• Food Service</li> <li>• Electronics</li> </ul> |
|--|---|



Distributed by:



Toll Free: 1.800.277.7898

www.piedmontplastics.com